

# FOR LEASE

BERLIN, CONNECTICUT  
29 STEELE BLVD

## STEELE CENTER

Up to 1,650 Square Feet  
Plus Outdoor Patio Space  
FREE STANDING BUILDING AT STEELE CENTER

UNDER CONSTRUCTION



## Commercial Space for Lease

- Build-to-suit: Fully Customizable
- ADA Compliant & Free On-site Convenient Parking
- Adjacent to the Berlin Train Station & Hartford Line
- Surrounded by Nearly 100 Market-rate Multifamily Units
- Up to 1,650 Square Feet plus Outdoor Patio Space - Stand Alone Building
- Occupancy Spring 2024
- Standard Buildout Included in Lease Price
- Ideal for Restaurant, Fast Food, Salon and more!

Built by Lovley Development, Inc - Developed by Newport Realty Group

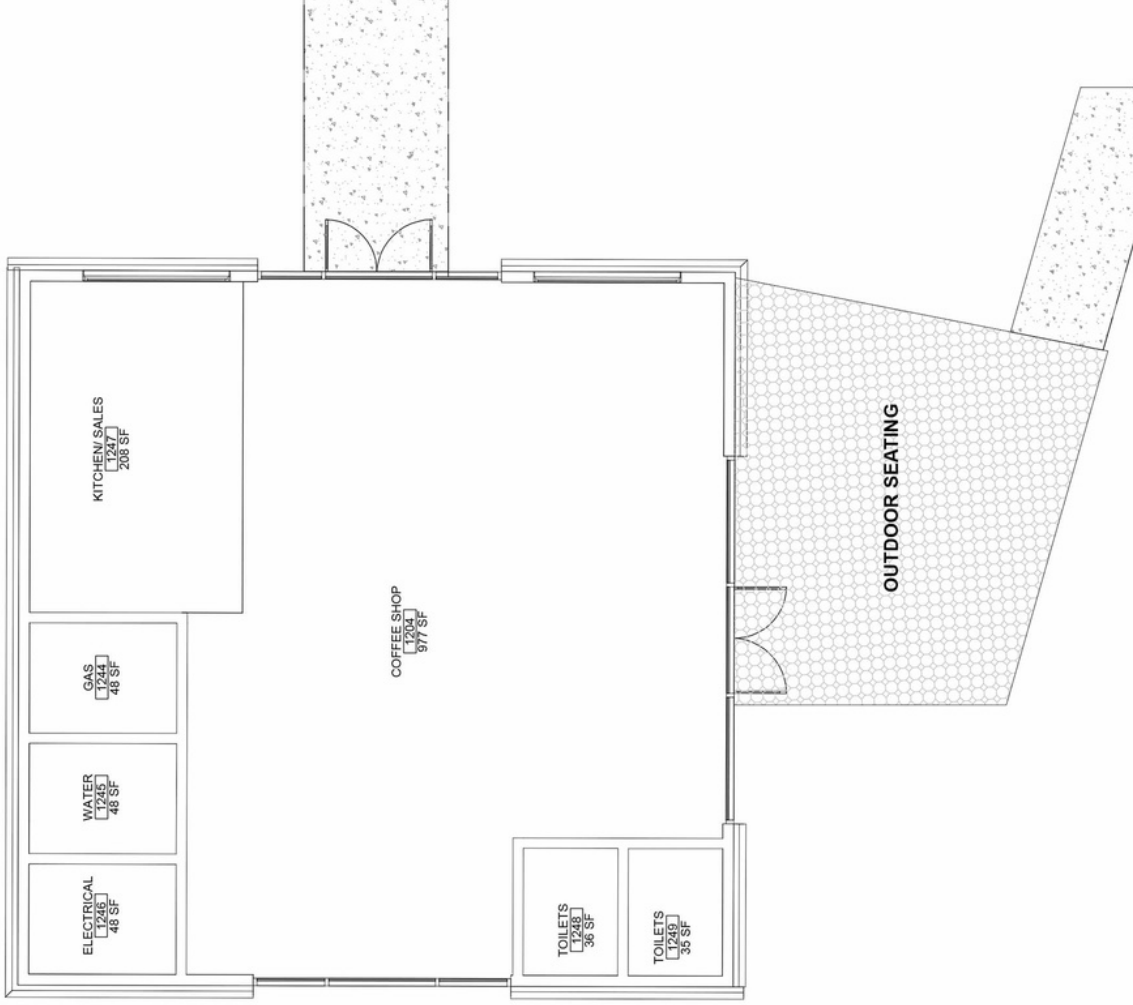


Renée Meuse Lovley, REALTOR® | 860-227-8320  
connect@reneemeuse.com

**CENTURY 21**  
AllPoints Realty

**STEELECENTER.COM**





**CENTURY 21**  
AllPoints Realty

**STEELECENTER.COM**

Renée Meuse Lovley, REALTOR® | 860-227-8320  
connect@reemeuse.com





Berlin Steele

Future  
55 STEELE BLVD

Subject Site  
29 STEELE BLVD

Under Construction  
10 STEELE BLVD

Tavern  
on the Trax

Fully Leased  
9 STEELE BLVD

Newport Center

Berlin  
Train Station

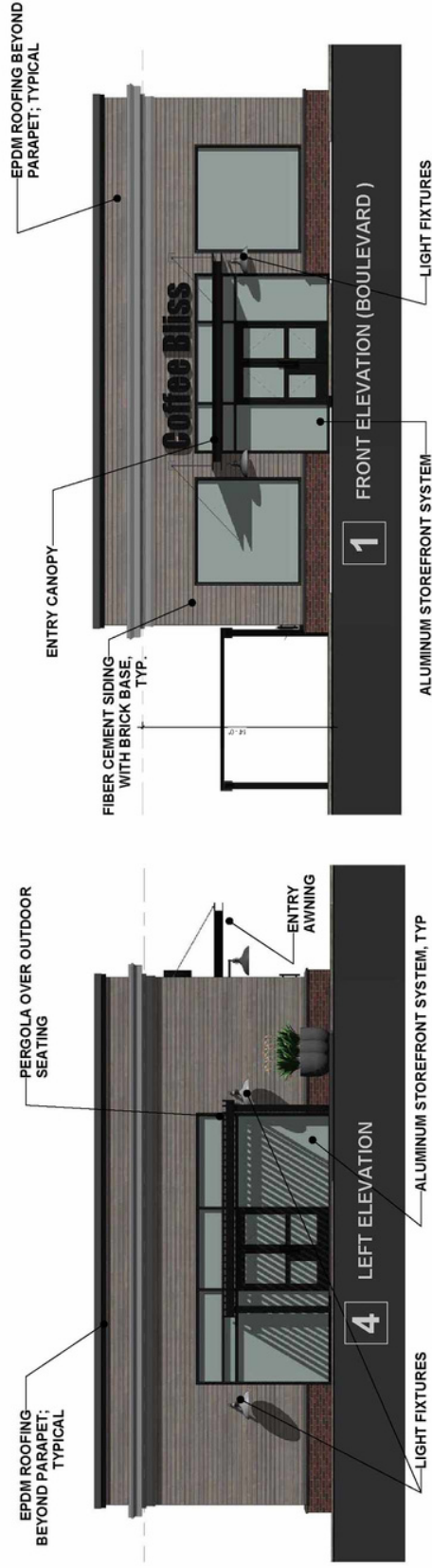
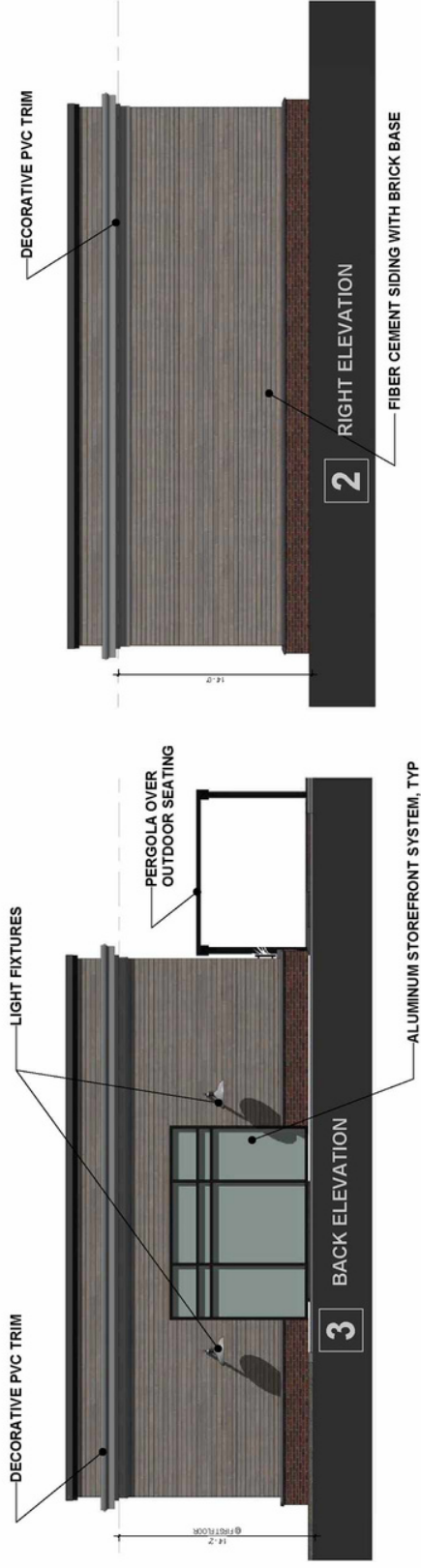


**CENTURY 21**  
AllPoints Realty

**STEELECENTER.COM**

Renée Meuse Lovley, REALTOR® | 860-227-8320  
connect@reneemeuse.com





**CENTURY 21**  
AllPoints Realty

**STEELECENTER.COM**

Renée Meuse Lovley, REALTOR® | 860-227-8320  
connect@reneemeuse.com

